

# Key Concepts from the Benign Paroxysmal Positional Vertigo CPG



## Recommendations For

**Strong Recommendation:**  
Diagnose posterior semicircular canal BPPV using Dix-Hallpike Maneuver

**Strong Recommendation:**  
Treatment of posterior canal BPPV using Canalith Repositioning maneuvers (Epley)

### Recommendation:

- Diagnosis of Lateral Semicircular canal BPPV using supine roll test
- Differentiate other causes of symptoms
- Don't forget to reassess for continued symptoms or refer out if needed!

★ EDUCATION

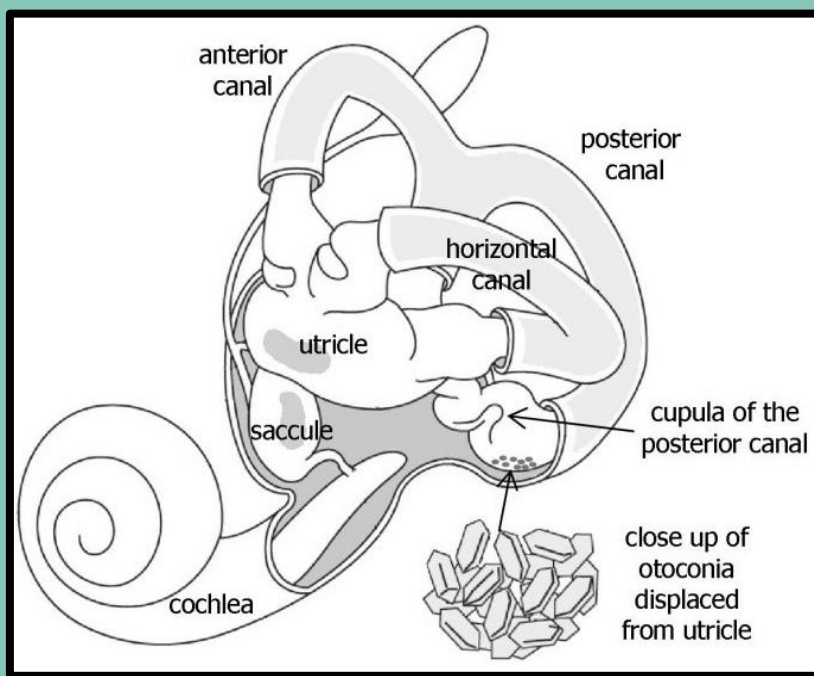
Dix-Hallpike:



Roll Test:



How To!



## Recommendations Against

**Strong recommendation against:**  
No post-procedural postural recommendations after repositioning of semicircular canals

**Recommendation Against:**  
Radiographic and Vestibular testing for diagnosis of BPPV

**Recommendation Against:**  
Medical Therapy:

- Not routinely treat using vestibular suppressant medications

This form provides highlights from the published Bhattacharyya et. al., 2017 article. For more information and access to the article, scan the QR code:

